



# Depon Pump Co. , Ltd.

## Pump List

### Part 1: The Complete Series Of Slurry Pumps

Phone & What'sApp: 86 13932278621  
Email: admin@deponpump.com Skype: shirleysheli

#### Depon MAH(R) Range (Horizontal Slurry Pump)



Usage: Slurry, Sand and Water

Technical Data:

Capacity: Up to 3600m<sup>3</sup>/hr (1000 l/s)

Head: Up to 112m (367 feet)

Speed: Up to 3200 rpm

Size : NB 25 to NB 350 (1' up to 14')

Temperature: Max. 110°C

Drive: Diesel or Electric

#### Depon MHH Range (Horizontal High Head Slurry Pump)



Usage: Slurry, Sand and Water

Technical Data:

Capacity: Up to 1260 m<sup>3</sup>/hr (350 l/s)

Head: Up to **200 m (656 feet) high head**

Speed: Up to 1800 rpm

Size : NB 150 to NB 250 (6' up to 10')

Temperature: Max. 110°C

Drive: Diesel or Electric

#### Depon MSP(R) Range (Vertical Sump Pump)



Usage: Slurry, Sand and Water

Technical Data:

Capacity: Up to 1267m<sup>3</sup>/hr (352 l/s)

Head: Up to 43 m (141 feet)

Speed: Up to 1500 rpm

Size : NB 40 to NB 250 (1.5' up to 10')

Temperature: Max. 110°C

Drive: Diesel or Electric

## Depon SS Range (Submersible Slurry Pump)



Usage: Slurry, Sand and water

Technical Data:

Capacity: Up to 2400 m<sup>3</sup>/hr (666 l/s)

Head: Up to 60m (196 feet)

Speed: Up to 1480 rpm

Size : NB 80 to NB 400 (3.15' up to 16')

Temperature: Max. 110°C

Drive: Diesel or Electric

### Slurry Pump Series Features

Handled liquids : Mining Dewatering, Ore slurry, Ash, Iron, Bauxite, Bronze, Sand...

Applications : Power plant, Coal washing, Mining, Cement, Steel plants...

Advantages	Material Option	Hi-chrome alloy, Cr27%(A05)
		Martensitic white iron, Ni-hard 1
		Chromium/ Molybdenum, Cr15Mo3
		28%Cr, Low Carbon, A49
		Rubber
	Bearings	Original FAG or TIMKEN Bearings
	Shaft & Sleeve	SS304, SS316, 40Cr, #40 Steel optional, 2 Cr13
	Sealing	Mechanical seals
		PTFE Packing
PTFE & Expeller seal		

## Part 2: The Complete Series Of Water Pumps

Phone & What'sApp: 86 13932278621

Email: admin@deponpump.com Skype: shirleysheli

### Depon IS Range (Horizontal Single Stage End Suction Water Pump)



Usage: Clean water

Technical Data:

Capacity: Up to 1900m<sup>3</sup>/hr (523 l/s)

Head: Up to 125 m (410 feet)

Speed: Up to 2900 rpm

Size : NB 50 to NB 350 (2' up to 10.5')

Temperature: Max. 150°C

Drive: Diesel or Electric

### Depon S Range (Horizontal Split Casing Double Suction Water Pump)



Usage: Clean water

Technical Data:

Capacity: Up to 30000m<sup>3</sup>/hr (8333 l/s)

Head: Up to 230m (755 feet)

Speed: Up to 2960 rpm

Size : NB 150 to NB 1600 (6' up to 64')

Temperature: Max. 120°C

Drive: Diesel or Electric

### Depon D Range (High Pressure Multistage Water Pump)



Usage: Clean water

Technical Data:

Capacity: Up to 840m<sup>3</sup>/hr (233 l/s)

Head: Up to 680m (755 feet)

Speed: Up to 2950 rpm

Size : NB NB 50 to NB 200 (2' up to 8')

Temperature: Max. 150°C

Drive: Diesel or Electric

### Water Pump Series Features

Handled liquids : Clear water, Municipal water supply, fire protection, water transfer

Applications : Power plant, Coal washing, Mining, Cement, Steel plants...

Advantages	Material Option	Cast iron, duct alloy, carbon steel, zinc free bronze, silicon brass or stainless steel construction, Other materials available on request.
	Bearings	Heavy duty bearings and Original FAG Bearings
	Shaft & Sleeve	SS304, SS316, 40Cr, #40 Steel optional
	Sealing	Stainless Steel Single or double mechanical seals PTFE Packing PTFE & Expeller seal

## Part 3: The Complete Series Of Sewage Pumps

Phone & What'sApp: 86 13932278621  
 Email: admin@deponpump.com Skype: shirleysheli

### Depon WQ Range (Submersible Sewage Water Pump)



Usage: Sewage & Clean water  
 Technical Data:  
 Capacity: Up to 5760m<sup>3</sup>/hr (1600 l/s)  
 Head: Up to 62m (203 feet)  
 Speed: Up to 2880 rpm  
 Size : NB NB 50 to NB 600 (2' up to 23')  
 Temperature: Max. 155°C  
 Drive: Electric

### Depon ZX/ZW Range ( Self-priming Suction Water Pump)



Usage: Sewage & Clean water  
 Technical Data:  
 Capacity: Up to 800m<sup>3</sup>/hr (222 l/s)  
 Head: Up to 80m (262 feet)  
 Speed: Up to 2900 rpm  
 Size : NB NB 25 to NB 300 (1' up to 12')  
 Temperature: Max. 200°C  
 Drive: Diesel or Electric

## Sewage Pump Series Features

Handled liquids : Clear water, Municipal water supply, fire protection, water transfer

Applications : Water Treatment, Building Services, Sumps and Basements, Mining, Civil, Construction, Industry, Municipal, Processing

Advantages	Material Option	Cast iron, duct alloy, carbon steel, zinc free bronze,
		silicon brass or stainless steel construction,
		Other materials available on request.
	Bearings	Heavy duty bearings and Original FAG Bearings
	Shaft & Sleeve	SS304, SS316, SS420, 40Cr, #40 Steel optional
	Sealing	Stainless Steel Single or double mechanical seals
PTFE Packing		
PTFE & Expeller seal		

## Part 4: The Complete Series Of Chemical Pumps

Phone & What'sApp: 86 13932278621  
 Email: admin@deponpump.com Skype: shirleysheli

### Depon IH Range (Horizontal Single Stage Chemical Pump)



Usage: Chemical water,corrosive liquid  
 Technical Data:  
 Capacity: Up to 1900m<sup>3</sup>/hr (527 l/s)  
 Head: Up to 125 m (410 feet)  
 Speed: Up to 2900 rpm  
 Size : NB 50 to NB 350 (2' up to 10.5')  
 Temperature: Max. 105°C  
 Drive: Diesel or Electric

### Depon AFB Range (Horizontal Chemical Pump)



Usage: Chemical water,corrosive liquid  
 Technical Data:  
 Capacity: Up to 200m<sup>3</sup>/hr (55 l/s)  
 Head: Up to 64 m (209 feet)  
 Speed: Up to 2900 rpm  
 Size : NB 25 to NB 150 (0.75' up to 4.5')  
 Temperature: Max. 130°C  
 Drive: Diesel or Electric

### Chemical Pump Series Features

Handled liquids : Chemical water,corrosive liquid

Applications : Food, Medicine, Petroleum, Metallurgy, synthetic fiber, Chemical

Advantages	Material Option	SS303, SS304, SS316
		RPP, PVDF,ABS.
		Other materials available on request.
	Bearings	Original FAG Bearings
	Shaft & Sleeve	SS304, SS316, 40Cr, #40 Steel optional
	Sealing	Stainless Steel Single or double mechanical seals

**Part 5:**

**Diesel Engine Drive Pump**

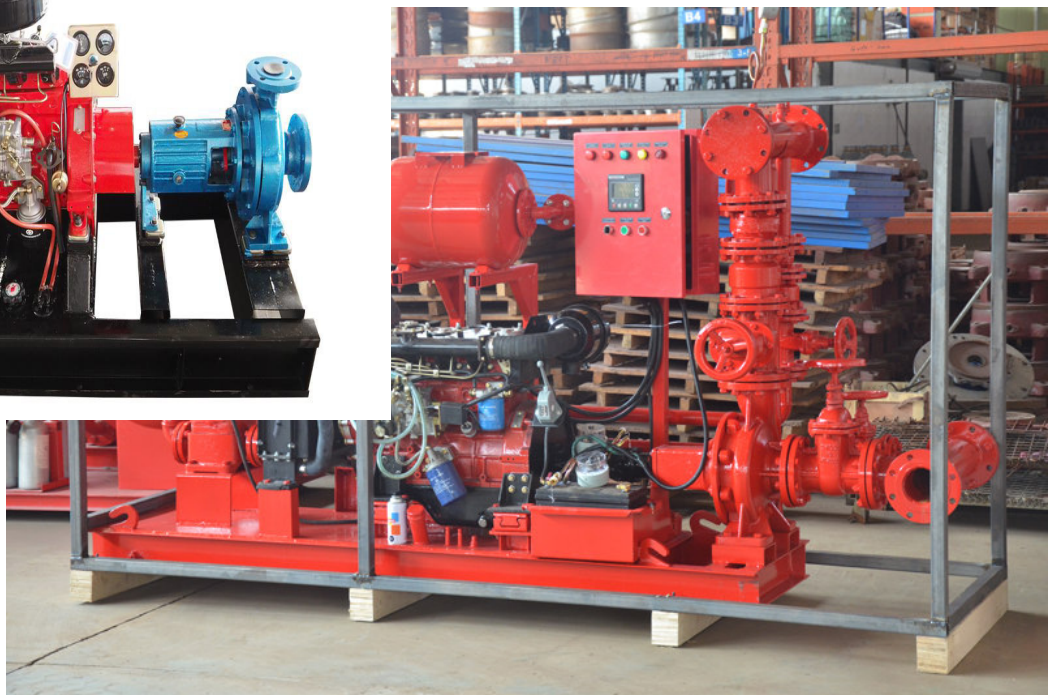
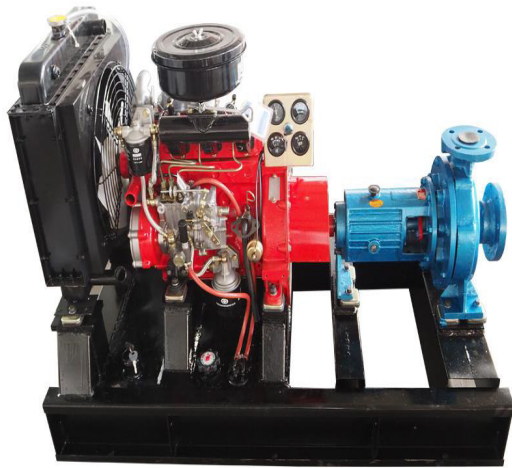
Phone & What'sApp: 86 13932278621

Email: admin@deonpump.com Skype: shirleysheli

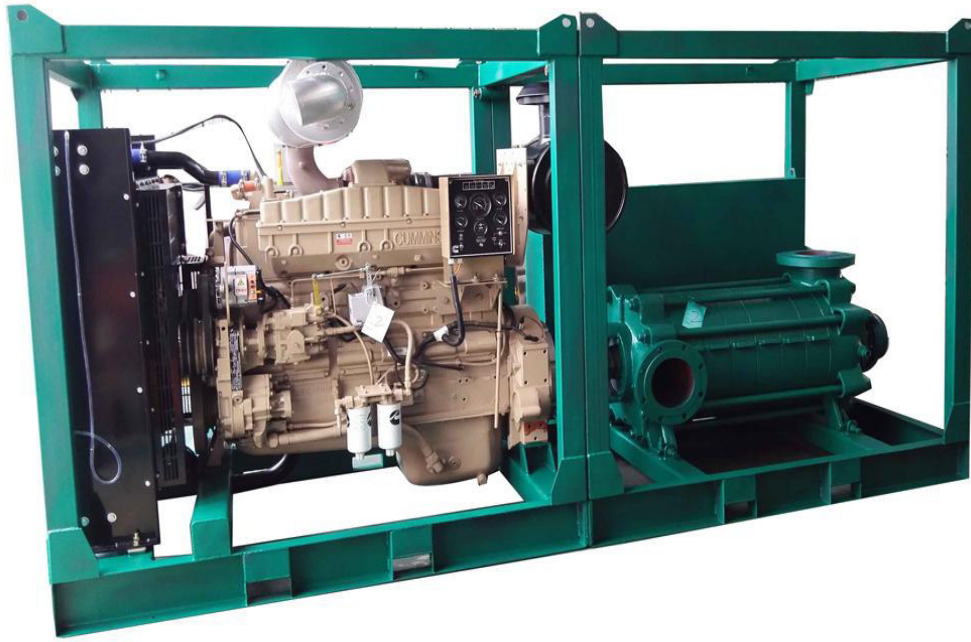
**MAH Diesel Slurry Pump**



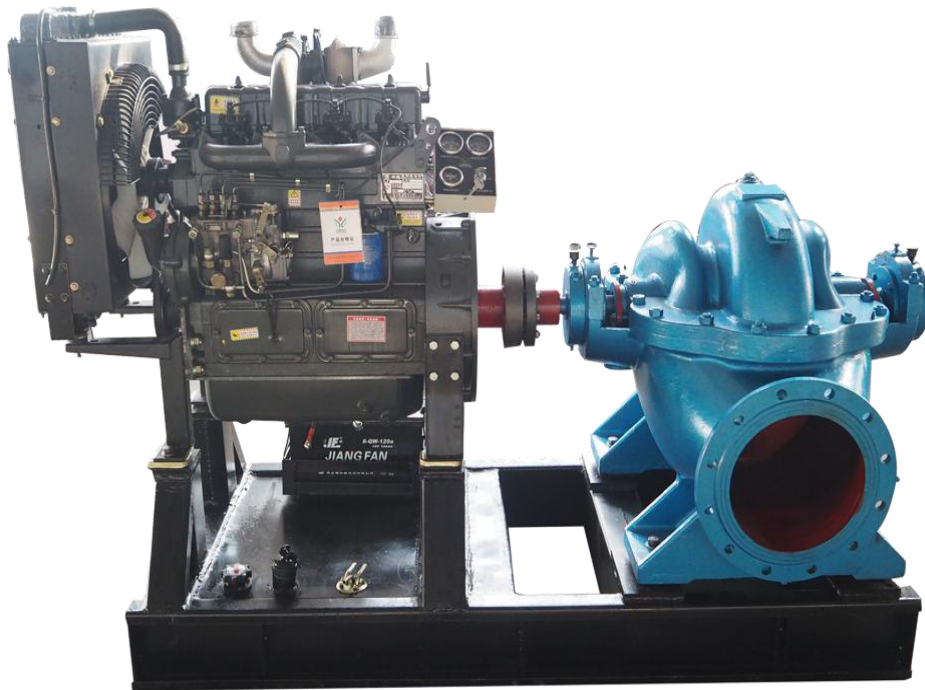
**IS Diesel Water Pump**



## D Diesel Water Pump



## S Diesel Water Pump



## ZX/ZW Diesel Water Pump



## Trailer Diesel Water Pump

